



# Kentucky ACHE Corporate Partnership Opportunities



**2021**

Kentucky Chapter  
of ACHE

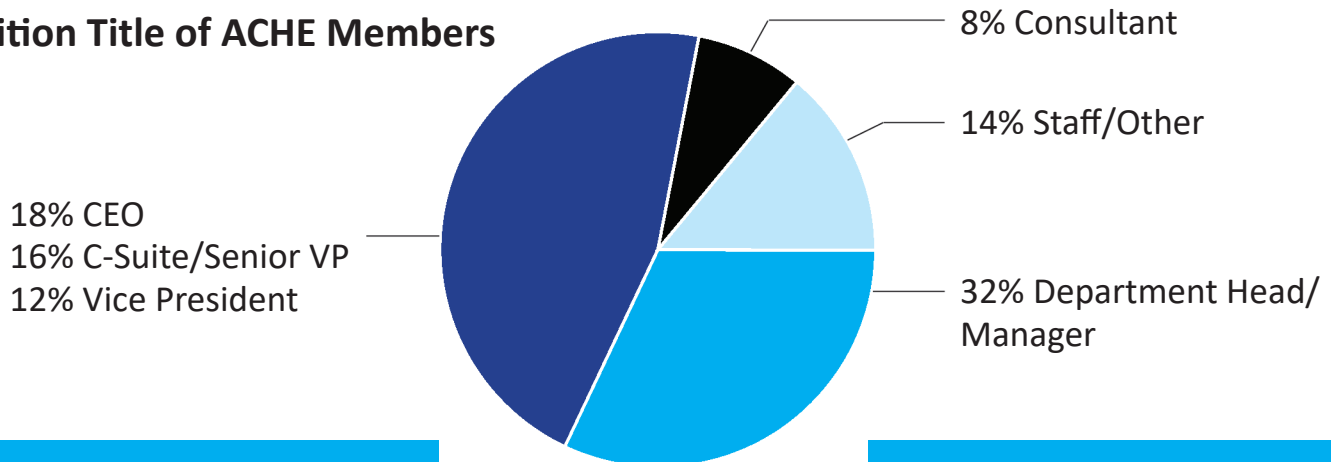
## American College of Healthcare Executives *for leaders who care*

The **American College of Healthcare Executives (ACHE)** is an international professional society of more than 40,000 health care executives who lead hospitals, health care systems and other health care organizations. ACHE offers its prestigious FACHE® credential, signifying board certification in healthcare management.

The **Kentucky Chapter of ACHE (KY ACHE)**, made up of more than 500 members, is one of 80 chapters providing access to networking, education and career development at the local level. KY ACHE is successful because members are engaged and because it has the support of corporate partners.

Your corporate partnership helps KY ACHE continue to provide high quality programming close to home and at affordable rates. In return, KY ACHE provides you exposure and many opportunities to network and engage with health care administrators in Kentucky. As a corporate partner, organizations have yearlong exposure and sponsorship opportunities to build one-on-one relationships with key decision makers who make major purchasing decisions in areas such as information systems, capital equipment, management consulting, pharmaceuticals and clinical/operations management systems.

**Position Title of ACHE Members**





Company Name: \_\_\_\_\_

Company Description (25 word description for promotion) \_\_\_\_\_

Address: \_\_\_\_\_

City: \_\_\_\_\_ State: \_\_\_\_\_ Zip: \_\_\_\_\_

Phone: \_\_\_\_\_ Fax: \_\_\_\_\_

Website: www. \_\_\_\_\_

**Mailing address you would like to receive materials from KY ACHE:**  **check if same as above**

Name/Title of Representative: \_\_\_\_\_

E-mail address: \_\_\_\_\_

Alternate Representative Name/Title: \_\_\_\_\_

E-mail address: \_\_\_\_\_

**Kentucky ACHE Partnership Benefits are from January 1, 2021 - December 31, 2021**

**Platinum Plus - \$5,000**

**Platinum - \$2,000**

**Gold Level - \$1,500**

**Silver Level - \$1,000**

**Bronze Level - \$500**

**Add-ons**

Opportunity to host educational webinar to members (with prior approval by KY ACHE Board) - **\$1,500**

Sponsor KY ACHE registration bag at your choice of the Chapter's event with marketing material included - **\$1,000**

Sponsor of a refreshment break at any program - **\$500**

Bag stuffer/handout for any program - **\$150**

Reception sponsor - Networking social - **\$300**

**Mail sponsorship application to:**

Blue & Co., LLC  
Suite #300  
Attention: Jordan Rose  
2650 Eastpoint Parkway  
Louisville, KY 40223  
502-992-3482

**Payment (check appropriate payment option):**

**Check enclosed (make check payable to KY ACHE)**

Check number: \_\_\_\_\_

Amount: \$ \_\_\_\_\_